



Guide for Judges and Chairs of PSA-recognized Exhibitions with Photo Travel Sections

Photo Travel Division

April 2020

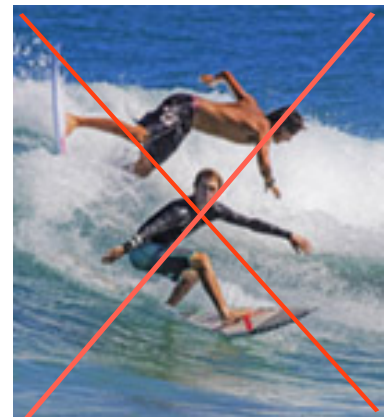
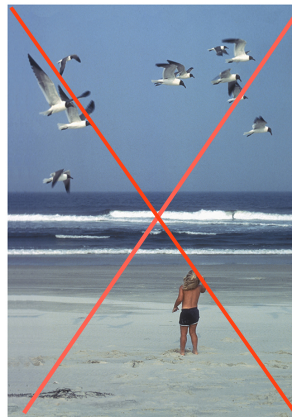
This guide should be reviewed by the exhibition chair, the PT section chair and the PT judges before any judging.

Purpose of the Photo Travel Definition

The PSA Photo Travel Division (PTD) is **reality-based**, like the PSA Photojournalism and Nature Divisions. The objective of PSA Photo Travel (PT) is to show the world **as it is found naturally**. The purpose of the PT Definition is to guide PT photographers towards making images that show **how our world really is**, rather than to arrange it and to manipulate images to obtain the “best” photographs. **PT images should be a true record of that scene. The PT Definition is also a guide for exhibition judges to ensure that images that violate the definition are not accepted.**

Below are the individual sections of the PT Definition **in red**, illustrated with examples and comments.

A Photo Travel image expresses the characteristic features or culture of a land as they are found naturally. There are no geographic limitations.



In the case of landscapes or buildings, it is not necessary to know “where the place is.” The image only needs to have identifiable features so that the place can be recognized by someone visiting it.



Images from events or activities arranged specifically for photography, or of subjects directed or hired for photography are not allowed.



The photo below confirms that the picture of the boys throwing water is a “setup,” it is staged.

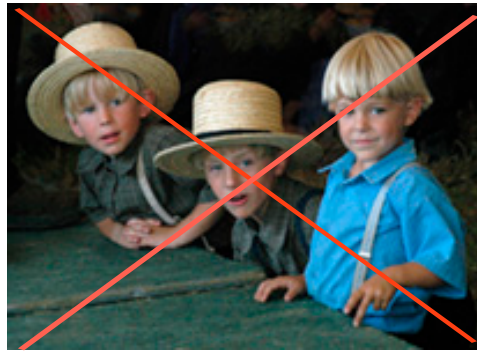


This is not the normal behavior of these fishermen. It’s a “setup” for photographers.



Setups can be identified when many images of the same or similar scenes are submitted to exhibitions, or when they depict unnatural actions or behavior by the people shown in the photo.

Close up pictures of people or objects must include features that provide information about the location.



The purpose of this requirement is to eliminate photographs that could have been taken in a studio instead of the natural environment of the person(s) shown in the photograph.

Techniques that add, relocate, replace or remove any element of the original image, except by cropping, are not permitted.



Image manipulation by removing, moving or adding objects is often difficult to spot and to prove. When judges suspect a violation that should be investigated.

The only allowable adjustments are removal of dust or digital noise, restoration of the appearance of the original scene, and complete conversion to greyscale monochrome. Other derivations, including infrared, are not permitted. All images must look natural.





Oversaturated, overly sharpened and other images with unnatural artifacts, such as halos or strong vignetting, should be given lower scores in judging. Extreme fish-eye images that are distorted do not appear natural. Partial desaturation of areas of the image does not look natural and is not allowed.

Entire PT Definition:

A Photo Travel image expresses the characteristic features or culture of a land as they are found naturally. There are no geographic limitations. Images from events or activities arranged specifically for photography, or of subjects directed or hired for photography are not allowed. Close up pictures of people or objects must include features that provide information about the location. Techniques that add, relocate, replace or remove any element of the original image, except by cropping, are not permitted. The only allowable adjustments are removal of dust or digital noise, restoration of the appearance of the original scene, and complete conversion to greyscale monochrome. Other derivations, including infrared, are not permitted. All images must look natural.

Additional Comments:

Judges of PT exhibitions should ask themselves the following questions when judging each image:

1. Does this image meet the PT Definition, in particular, does it look natural?
2. Is this image the result of a setup (i.e. is it staged), beyond reasonable doubt?
3. Does it meet the definition of the theme, if the exhibition has theme sections (e.g. are landscape images submitted to "People" sections, or people images submitted to "Scapes" sections?)
4. Images that are being judged as not meeting the PT Definition should be scored lower, regardless of their photographic merit. However, disqualification should be used only in extreme, unambiguous cases.

For additional information, contact Nadia Filiaggi, EPSA, PTD Exhibition Standards Director, ptd-esd@psa-photo.org

Authorship: Tom Tauber, APSA, EPSA

Assistance: Lynn Maniscalco, Hon FPSA, EPSA

With contributions, approval and distribution by PT Division