

# Double Exposure

VOLUME 31

ISSUE 4

DECEMBER 2012

## INSIDE THIS ISSUE:

Exhibition Results 3

PSA PID Competition 3

Three Elements of  
great Landscapes 4

Classes and Work-  
shops 6

Call Entries 8

Local Exhibition 9

Photograph Bald  
Eagle 12

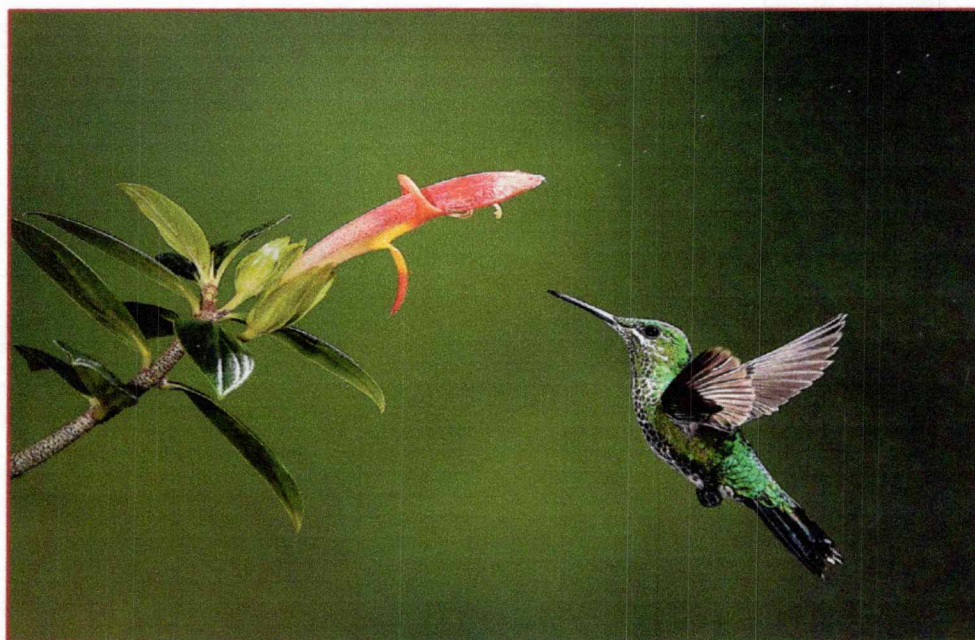


Photo by Robin Harrison

## 2012-2013 Mid Atlantic chapter Officers

### Chairperson:

Roz Kleffman

mermaid51@verizon.net

### Program chair:

My Phuong Nguyen, PPSA

mpnguyenfoto@yahoo.com

### Membership Vice Chair:

Bill Yeagley

byeagley@aol.com

### Competition Chairman:

Michael Tran, PPSA

mdtranphotos@yahoo.com

**Secretary:** Jim Roy, FPSA, PPSA

Jamesroy3@cox.net

**Treasurer:** Daniel Hanson

dnh.hnsn@gmail.com

**New Editor:** William E. Gibson

tookie41@comcast.net



## Summary of PSA MAC 2012-2013 schedule

Feb	Spring program
May	Summer program
June	Picnic
September	PSA Conference
Oct	Fall Program
November	Annual Chapter Competition
Dec	Field Trip Conowingo shooting

### Chairman column by Roz Kleffman

Happy Holidays!!!

It is hard to believe that the holidays are already here. Seems like it was just a few minutes ago that we were sweltering in the heat of summer. Time has a way of slipping by us. Take the time NOW to get that photo. The snow will be here and gone. The old building will soon be taken down. The child will soon be off to college. Good photos take time. Plan ahead to get every opportunity to capture the perfect light. Start by scouting out a favorite place. Visit it often. Walk around and find that perfect spot. Get to know the place. Gather information. Make some notes. Look up information about sunrise and setting points. Moonrise may also be helpful too. Think about the props you may need to add something to the scene. That girl with a red umbrella may be just the ticket to capturing the eye of a judge. With a little planning, you will be there at just the right light.

Many of us carry cameras with us everywhere. Cell phone photography has really expanded the opportunity to get a great picture. Check out the apps available for your cell phone photos. You will be amazed at what is out there. Maybe Santa Claus will get you a few apps for Christmas.

### PSA Chapter Showcase Selection Process by Michael Tran

The PSA Chapters Showcase, containing the best entries from the 11 chapters nationally, will be judged by the PSA hosting club. Our winning images at the year end competition will be submitted to the PSA hosting chapter before the PSA conference. We may have 12 images in the show. The chapter winner will be showcased at the PSA conference.

**DOUBLE EXPOSURE**

## 2012 PSA MAC Exhibition Results by Tam Le

The 2012 exhibitions were judge by Nikhil Bahl, Mary Ann and Roy Sewall. Thank you for the long hours you spent determining the winners.

The following link shows the results.

<http://www.exhibitionhosting.com/mac>

I, Tam Le, served as webmaster.



## PSA PID Competition by Roz Kleifman

Have you thought about entering any of the PSA PID Competitions? No, I am not talking alphabet soup.

PSA PID competitions are held 4 times a year in November, January, March and May. These competitions are club based and afford photographers an opportunity to enter a PSA competition free of charge. The rules are simple: any camera club that belongs to PSA can enter. Each club may enter 6 *digital* photos in each competition. Photographs are judged by a panel of three judges. Scores range from 6 to 15 points. Awards are given to 20% of the entries with the first 10% receiving an Award of Merit and the last 10% receiving an Honorable Mention. Points are tallied for each club. There are no themes required for the photographs.

The Bowie-Crofton Camera Club has been participating in the PID competitions for at least 20 years. Competitions were originally slide competitions. We have moved up in the ranking from Group F to Group B. B-CCC also volunteers to host a competition once a year. Just finished judging the November Group A.

Talk to your camera club about entering the PSA PID Competitions. You have missed the first competition of this club year but make-ups are allowed. Opportunities await you.

## Photography Quote this week researched by My Phuong

"We don't make a photograph just with a camera, we bring to the act of photography all the books we have read, the movies we have seen, the music we have heard, the people we have loved."

—Ansel Adams



## Ask Tim Grey Question by Tim Grey

**Question:** My computer has almost stopped working because I have too much stored on the internal hard drive. Please tell me how to transfer all of my photos (26,000) from my hard drive to an external hard drive. I want to access all of my photos, keyword information, etc., that is now on my hard drive via my external hard drive.

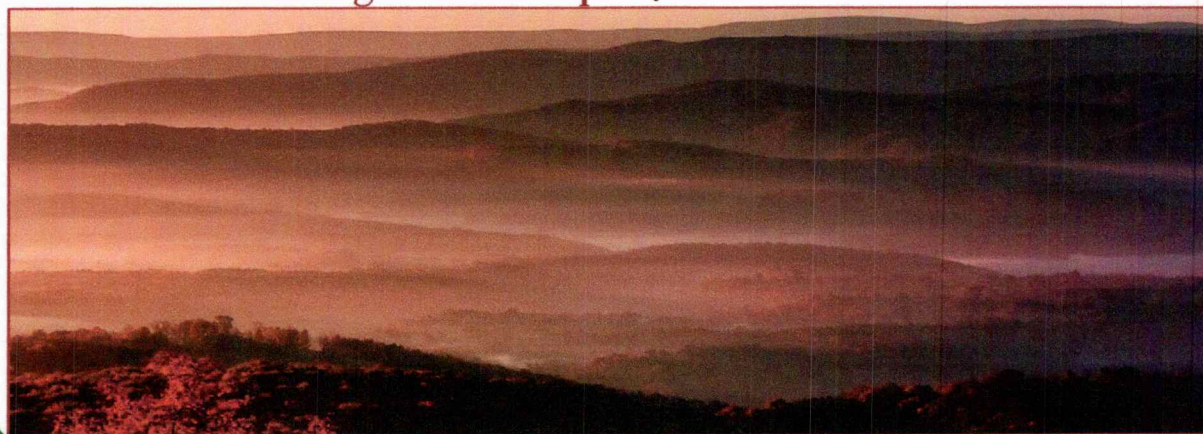
**Tim Grey's Answer:** I'm sorry to say there isn't an especially simple solution here. But it can be done. There are two basic approaches you might consider.

If you don't have too many folders that include your photos, you might consider simply dragging and dropping within the folder view in the Elements Organizer, dragging folders from their current location on your internal hard drive to the external hard drive. Unfortunately, you do need to drag one folder at a time for this process. I highly recommend creating a full backup of all of your images before you start this process, as there are some risks involved both in terms of hardware failure and errors on your part in terms of the drag-and-drop operation. The approach I personally prefer, though one that involves some additional hardware, is to create a backup of your catalog to one external hard drive, and then restore that catalog to another external hard drive that is the hard drive you really intend to store the images on. In many ways this approach is much simpler than dragging-and-dropping a large number of folders, but of course it also requires that you have two external hard drives capable of storing the full contents of your Elements catalog.

Once you have backed up and restored the photos in order to transfer the images to an external hard drive with all catalog information updated, I recommend browsing through your newly updated catalog to make sure everything seems to be in order. I then recommend creating a new full backup of your images before erasing your photos from the internal hard drive.

There is actually an Adobe Help topic that addresses the specific steps of using the backup and restore process in more detail, which you can find here: <http://adobe.ly/QlzkI0>

## Three elements of a great landscape by Steve Berardi



Photograph by My Phuong

DOUBLE EXPOSURE

Have you ever wondered why some landscape photographs look so much better than others? Maybe some landscapes look dull or flat to you, but you don't really know why. Well, *perhaps the photo was missing one of the three elements of great landscapes: a foreground, background, and perfect light.*

Below are a few tips for capturing these three elements so you never get a flat looking landscape again.

### **Foreground**

*The job of the foreground is to lead the viewer's eyes into the background. It doesn't have to be particularly amazing (as long as the background is)—just pick something that contrasts well with the background.*

If there are any large or notable objects in the foreground (i.e. flowers, big rocks, trees, etc.), do not put them in the center of the frame—put them off to the side (follow the [rule of thirds](#)). The photo at the bottom of page 4 would have looked very weird if the large rocks in the foreground were centered, instead of being off to the sides.

### **Background**

*Usually, the background is the most dramatic part of a landscape photograph.*

It's essential for the background to have perfect light glowing on it. Otherwise, the background won't stand out much from the foreground, or it may look flat and unsaturated.

### **Perfect Light**

Obviously, your photo needs perfect light! How do you get it? Well, you need to wake up really early, or stay out late (and probably miss the normal dinner time).

**The most perfect light for landscapes occurs twice a day: once around sunrise and once during sunset.** It happens at this time because the sun is so low on the horizon which causes its light to travel through more of the atmosphere than it does at high noon—making the sunlight much softer, and less harsh.

Usually, the perfect light begins about 15 minutes before sunrise/sunset and lasts until 20 minutes after the sunrise/sunset. *The sunrise typically casts a cooler (blue) light, and the sunset always casts a very warm (red) light.*

### **The most common mistake**

All great landscape photos will have these three elements present, so remember them the next time you try capturing that beautiful light in the desert! *Many people forget the foreground, and are left with a photo lacking depth.* The foreground doesn't have to be amazing, it just needs to be there!



**Washington School of Photography**

many more at [www.wsp-photo.com](http://www.wsp-photo.com)

**Capital Photography Center**

Many other workshops at various locations.

<http://capitalphotographycenter.wildapricot.org/>

**Frank Van Riper and Judith Goodman**

Umbria Italy Photo Workshop

<http://www.gvrphoto.com/> or <http://www.experienceumbria.com/>

**Nikhil Bahl Workshops**

Private Instruction and Custom Workshops available

[www.nikhilbahl.com](http://www.nikhilbahl.com)

**Horizon Workshops**

Many more at [www.horizonworkshops.com](http://www.horizonworkshops.com)

**Joseph Van Ost Photo Safaris**

Venice at Carnival, Feb. 6-13, 2013

Aurora Borealis, Fairbanks, Alaska, Mar. 7-14, 2013

Tanzania—Serengeti National Park, Mar. 16-30, 2013

Midway Atoll, Hawaii, Mar. 18-26 or Apr. 1-9, 2013

Holland at Tulip Time, Apr. 13-24, 2013

[www.photosafaris.com](http://www.photosafaris.com)

**Glen Echo Park**

Advanced Master Darkroom Printing, Tue. Jan. 15-Mar. 19, 2013, 7-11pm

Basics: F Stop, Shoot & Shutter, Tue. Jan. 15-Mar. 5, 2013, 9:30am-12pm

Approaches to Portraiture, Thu. Jan. 31-Mar. 7, 2013, 7:30-9:30pm

And others at

<http://register.glenechopark.org/class/classclassIndex.aspx?ctlglID=41&ctgyID=32&typeID=2>

**Art Wolfe**

The Wilds of Hawaii, Jan. 14-18, 2013

Myanmar, Feb. 4-14, 2013

Bhutan, Mar. 25-Apr. 6, 2013

Vietnam, May 16-26, 2013

Kimberly, Australia, June 1-8, 2013

Bali, Indonesia, July 12-22, 2013

And more at <http://www.artwolfeworkshops.com/>

**Ghost Town Safari**

China, An Adventure in Culture, May 2 to June 2, 2013

<http://ghosttownsafari.com/category/workshops-and-safaris/>

**Corey Hilz Photography**

Chincoteague Island, Virginia

<http://coreyhilz.com/learn.html>

**Suzi Eszterhas**

Wildlife of Costa Rica, Jan. 6-18 or 19-31, 2013

Wildlife of Brazil, Sep. 1-15, 2013

Pantanal Wildlife, Brazil, Sep. 15-29, 2013

Wildlife of India, Nov. 2013 (dates TBA)

<http://www.suzieszterhas.com/toursWorkshops/>

**Yervant**

<http://www.yervant.info/seminars.html>

**National Geographic**

Mastering Travel Photography

<http://www.nationalgeographic.com/ngtseminars/seminars/mastering-travel-photography.html>

## Calls For Entries by David Blass

**Vermont Photo Workplace**

The Magic of Light, Deadline: Dec. 17

<http://www.vtphotoworkplace.com/>

**Focal Press Photography Contest**

Holiday, Deadline: Dec. 31

<http://focalpressphotographycontest.com/>

**Black Box Gallery (Portland, OR)**

The Poetic Landscape, Deadline: Dec. 6

<http://blackboxgallery.com/CallForEntry.html>

**A Smith Gallery (Johnson City, TX)**

<https://asmithgallery.com/>

**The Zebra Awards**

<http://tzipac.com/index>

**Art Fusion Galleries (Miami, FL)**

<http://www.artfusiongallery.com/service/international-fine-arts-competition-2/>

**Art Horse Magazine**

[http://www.arthorsemagazine.com/art\\_competition.html](http://www.arthorsemagazine.com/art_competition.html)



The 2012 Chapters Showcase was presented to an appreciative audience at the San Francisco Conference by Don Frisque, APSA, PPSA Chairman of the host, Wisconsin Chapter. Chapters Showcase Director, Bill Kramer and his wife Irene, did an excellent job of creating this Pro-Show Producer presentation. If you would like a CD or DVD of the Showcase, please email Bill Kramer at: [billkphoto@verizon.net](mailto:billkphoto@verizon.net) Shortly after the first of the year, Bill will be sending instructions on how to enter the 2013 Showcase. The Everglades Chapter will serve as the host Chapter in 2013.

### PSA Chapters Gallery

Photography by members of the Central Florida Chapter is currently displayed on the Chapter Gallery page of the PSA web site. Carlos Delgadillo, our Gallery Director has prepared the following schedule for Chapter participation in 2013 :

January – March	Gold Rush Chapter
April – June	Mid Atlantic Chapter
July – September	Wisconsin Chapter
October – December	Chicago Chapter

To find the Gallery on the PSA web site, go to About PSA, then drag to PSA Chapters, then drag to Chapters Gallery. If you have questions about the Gallery, please email Carlos at: [carlosdww@gmail.com](mailto:carlosdww@gmail.com)



Photo By Peter Bretting



**Endangered Species: Watermen of the Chesapeake** – Black & white images by Glen McClure. Through December 31. Calvert Marine Museum. 14200 Solomon's Island Rd., Solomon's, MD. 410-326-2042

**The Beautiful Time: Photography by Sammy Baloji** – Congolese photographer explores the meaning of memory and documents the copper mine industry before and after independence. Through January 6. National Museum of Natural History. Tenth Street and Constitution Ave., NW, Washington, D.C. [www.mnh.si.edu](http://www.mnh.si.edu)

**Nature's Best Photography Awards** – Portraits of plants, animals and people by the world's best amateur and professional photographers. Through April 30. National Museum of Natural History. Tenth Street and Constitution Ave., NW, Washington, D.C. [www.mnh.si.edu](http://www.mnh.si.edu)

**Matthew Brady's Photographs of Union Generals** – Studio portraits by the famous Civil War photographer. National Portrait Gallery. 800 F Street NW, Washington, D.C. [www.npg.si.edu](http://www.npg.si.edu)

**The Evolving Universe** – See images of space taken through telescopes and explore the time between the creation of the universe to present day earth. Through January 20. National Museum of Natural History. Tenth Street and Constitution Ave., NW, Washington, D.C. 202-633-1000. [www.mnh.si.edu](http://www.mnh.si.edu)

**Desert Air: Photographs by George Steinmetz** – Through January 27. National Geographic Society. 17<sup>th</sup> and M Street., Washington, D.C. 202-857-7588 [www.nationalgeographic.com/museum](http://www.nationalgeographic.com/museum)

**Ivan Sigal: White Road** – The lives of Eurasians captured by the American photographer between 1998 and 2005. Through January 27. Corcoran Gallery of Art. 500 17<sup>th</sup> Street, NW, Washington, D.C. 202-639-1700. [www.corcoran.org](http://www.corcoran.org)

**Taryn Simon: A Living Man Declared Dead and Other Chapters I-XVIII** – Photography and text reveal social changes driven by science, culture and chance. Through February 24. Corcoran Gallery of Art. 500 17<sup>th</sup> Street, NW, Washington, D.C. 202-639-1700. [www.corcoran.org](http://www.corcoran.org)

**Detroit Disassembled: Photographs by Andrew Moore** – 30 monumentally scaled photographs reveal Detroit's ruins. Through February 18. National Building Museum. 401 F Street NW, Washington, D.C. 202-272-2448. [www.nbm.org](http://www.nbm.org)

**Detroit is no Dry Bones: Photographs by Camilo Jose Vergara** – The sociologist documented the city's decline for more than 25 years. Through February 18. National Building Museum. 401 F Street NW, Washington, D.C. 202-272-2448. [www.nbm.org](http://www.nbm.org)

**The Serial Portrait: Photography and Identity in the Last One Hundred Years** – Twenty photographers explore the same subjects, primarily friends, family and themselves, over the course of days, months or decades. Through December 31. National Gallery of Art, West Building. Sixth Street and Constitution Ave., NW, Washington, D.C. 202-737-4215. [www.nga.gov](http://www.nga.gov)

**The Eyes of History** – The best news images of 2011 from the White House News Photographers Association. Through March 29. The Newseum. 555 Pennsylvania Ave., NW, Washington, D.C. 888-639-7386. [www.newseum.org](http://www.newseum.org)

**Picturing the Sublime: Photographs from the Joseph and Charlotte Lichtenberg Collection** – Eleven photographers document how artists use the camera to capture the beauty and destruction of the natural world. Through January 13. Phillips Collection. 1600 21<sup>st</sup> Street, NW, Washington, D.C. 202-387-2151. [www.phillipscollection.org](http://www.phillipscollection.org)

**Current list of PSA Exhibitions**

<http://www.psa-photo.org/exhibition/current-exhibition-list/>

**Future PSA Conferences**

2013 - Portland, Maine, Sept 15 - 21, 2013

2014 - Albuquerque, New Mexico, Sept 27 to Oct 3, 2014

**Travel Aids at Portland (by James Roy)**

On September 15-21, 2013 the PSA International Conference meets at the Marriott Portland at Sable Oaks in South Portland, Maine. That is about 550 miles from D.C., and I come from that part of Maine.

Portland, originally Falmouth, is the only really big city in Maine, but is a wonderful place to visit for several reasons. It has lovely islands, about a dozen of them well populated, at least 8 charming lighthouses, a huge marine traffic of sailing, steam, and motor vessels, and a history going back to when it was a trading post of Plymouth in the 1630s, mostly for furs. Indeed, Maine was the northern 16 counties of Massachusetts until 1820. Relatively cheap ferries take you around the harbor - my best lighthouse pictures are from the regular Casco Bay Ferry, not a scenic excursion. You can go around aboard an ex-America's Cup schooner under sail, and sights include a 200 year old observatory tower (for watching ships arriving), an art museum full of Winslow Homer works among others, the Maine Narrow Gauge Rail Museum (with running trains), Longfellow's House, active lobstering, clamming, and fortifications mounting 200 cannon that were actually used - the French attacked repeatedly and the British invaded the place in both the Revolution and War of 1812, as well as the Confederates hijacking a ship (but they were pursued and caught). The towers for spotting U-Boats in both World Wars are still there on the islands. Nearby (within 80 miles) are lovely lakes and other Maine Coastal sights - such as Camden, Wiscasset, Boothbay, Bailey Island, and Bar Harbor, the Maine Maritime Museum at Bath, and much, much more. Portland built over 1000 ships for World War II, and my father worked on many of them. There is a shipbuilders' memorial. A visit could easily be worth an extra week. Call or email me, Jim Roy, for more information. I also plan to go and spend an extra week in my nice big minivan and will ferry people into town from the hotel as well as guide some. Fall color will just be getting started, but the week after the Conference could be better.





### Education Needs for PSA MAC

We have many members clamoring for more education. PSA MAC will be attempting to meet some of this need, but your input is needed. I would love to hear answers from all of you to the following questions:

- ☐ What topics are of interest to our chapter?
- ☐ What would be the best way to get photography information to you?
- ☐ Would our club be likely to have any programs if they were available?
- ☐ Do you know any great instructors and can you give us their names?

Please e-mail me at [mpnguyenfoto@yahoo.com](mailto:mpnguyenfoto@yahoo.com) with your answers, and I'll be looking forward to hearing from you.

### PSA Club Service

[http://psa-clubservices.org/club\\_services/recognition.html](http://psa-clubservices.org/club_services/recognition.html)

#### Chapter showcase winning images:

<http://www.psa-photo.org/about-psa/psa-chapters/psa-chapters-showcase/2012-chapters-showcase/>

#### Mid-Atlantic Chapter web page

<http://www.psa-photo.org/about-psa/psa-chapters/chapters-list/mid-atlantic-chapter/>

#### Recognition of PSA system:

<http://www.psa-photo.org/recognition/>

### PSA Honors (Service Awards)

**APSA** (Associate) - awarded for material contributions to the advancement of photography, whether resulting primarily from photography proficiency and achievement, or for service. Photographic achievement must be combined with elements of service.

**FPSA** (Fellow) - awarded for outstanding contributions to the advancement of photography, involving a high degree of proficiency and achievement, combined with such elements of service as the dissemination of acquired knowledge through lecturing, judging, instructing, and publishing of articles or papers. **Personal photography achievement alone does not qualify for this honor.**

**Hon PSA** (Honorary Membership) - the recipient of this honor need not be a member of PSA. It is awarded for outstanding service to photography, particularly through organizational or similar work.

**Hon FPSA** (Honorary Fellow) - this is the highest designation awarded by the Society. The recipient must be a PSA member, and the honor is awarded only for unique or outstanding contributions of major importance to photography.

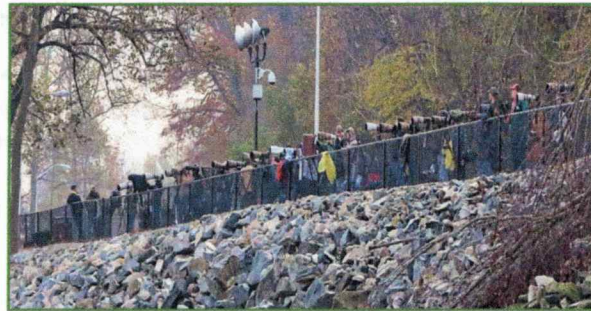
Photograph Bald Eagles at Conowingo Dam.

The Conowingo Dam is located in Northeastern Maryland, about 9.9 miles (16 km) from the river mouth of the Chesapeake Bay, about 5 miles (8 km) south of the Pennsylvania border and 45 miles (72 km) northeast of Baltimore.

Conowingo Dam is one of the best places to photograph Bald Eagles and other kinds of birds. During November there are large numbers of Bald Eagles migrating from the Canadian region to this area for a few weeks before heading down south. Other than Bald Eagles, Cormorants, Sea Gulls, Great Blue Herons are also fishing here at the Dam. There are lots of actions that will give you a lot of opportunities to get some very good shots.

There are 3 different areas at the Dam that you can pick where you want to set up:

-First area: along the edge of the parking lot is a chain-link fence which is about 25 feet above water level. This area will give you a larger view of the dam from the top.



-Second area: is a concrete viewing deck which is about a few feet above the water. This area will give you a narrow view and you may get silhouette if the birds are flying to your right side.



-Third area: passing through the gate and going down to the water's edge, fishermen may share this area but there is plenty of room for everyone. This area will give you a very narrow area but you can shoot at the ground level.

**DOUBLE EXPOSURE**



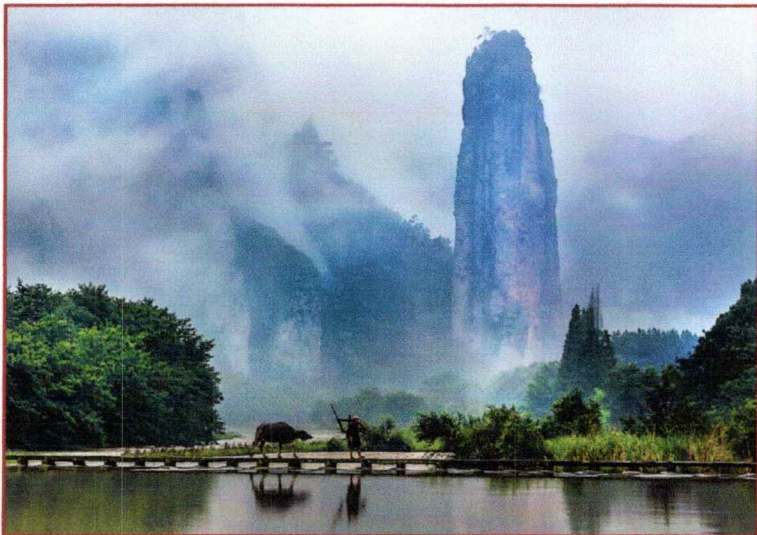


Photo by Tam Le

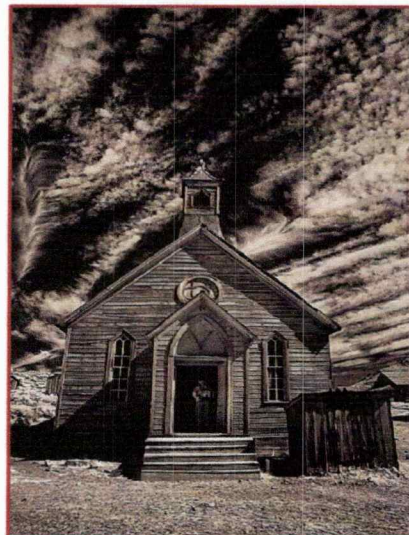
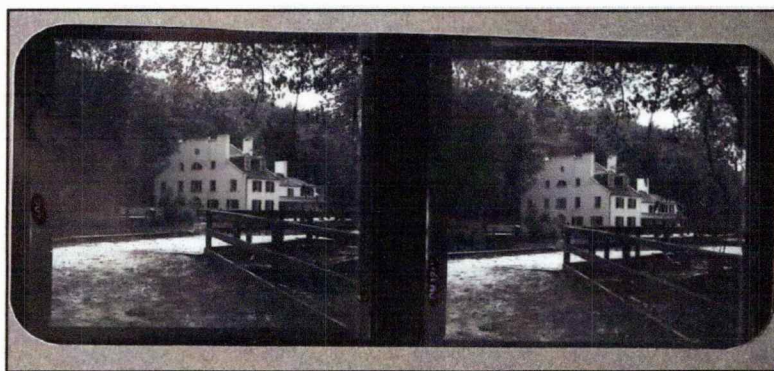


Photo by Judy Burr



3D Photo by James Roy

## PSA MAC Membership Form



### PSA Mid-Atlantic Chapter Membership Application

☐ New ☐ Renewal

Date \_\_\_\_\_ PSA Membership # \_\_\_\_\_

Name \_\_\_\_\_ Home Phone \_\_\_\_\_

Joint Member Name \_\_\_\_\_ Work Phone \_\_\_\_\_

Street Address \_\_\_\_\_ Fax (H) / (W) \_\_\_\_\_

City, State & Zip \_\_\_\_\_ E-Mail \_\_\_\_\_

Division Interests (check all that apply):

- ☐ Color Slide ☐ Nature ☐ Photojournalism ☐ Photo Travel  
☐ Pictorial Print ☐ Stereo ☐ Electronic Imaging (Still & Video)

Comments:

DUES: ☐ 1 year—\$7 individual; \$10 joint ☐ 3 years—\$20 individual; \$25 joint

Please make your MAC dues check payable to PSA. (For donations, please make out a separate check to PSA.)

☐ Mail your form and check to Bill Yeagley, Vice Chairman for Membership, 7322 Outhaul Lane, Burke, VA 22015.

*Double*  
**EXPOSURE**

NEWSLETTER OF THE MID-ATLANTIC CHAPTER,  
PHOTOGRAPHIC SOCIETY OF AMERICA